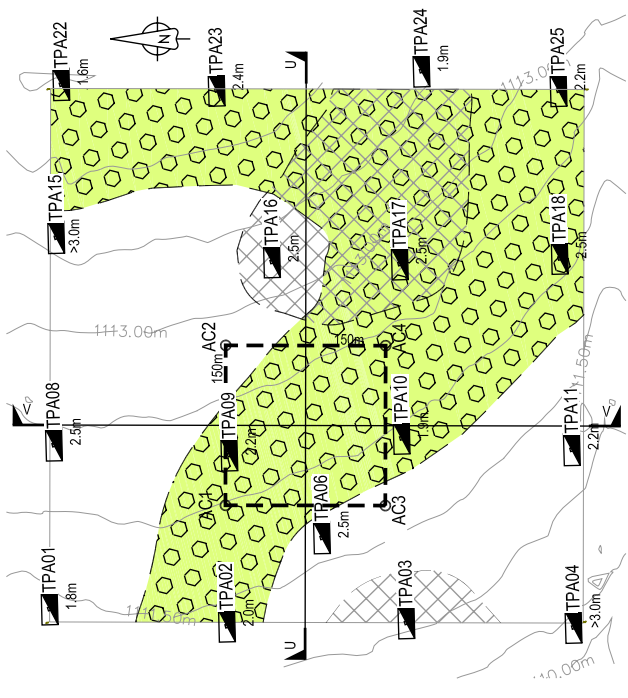


APPENDIX A

DRAWING J28199-A-001



LEGEND

- PALEO-COLLUVIUM
- NODULAR FERRICRET >1,0m
- TEST PIT POSITION & DEPTH TO TLB REFUSAL
- RECOMMENDED TERRACE POSITION

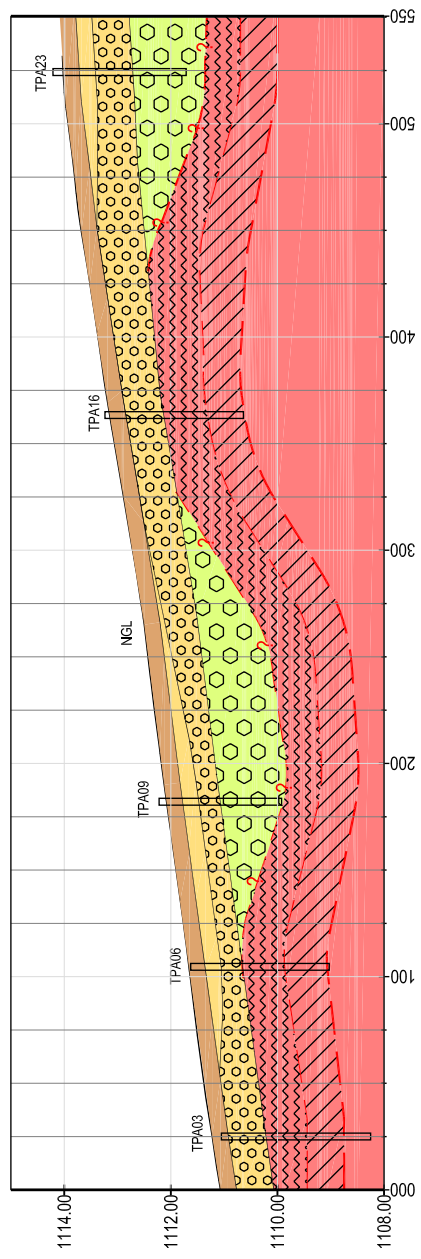
SOIL/ROCK PROFILE

- TOPSOIL
- HILL WASH
- NODULAR FERRICRET >1,0m
- PALEO-COLLUVIUM
- REWORKED RESIDUAL SHALE
- RESIDUAL SHALE
- SHALE (VERY SOFT ROCK)

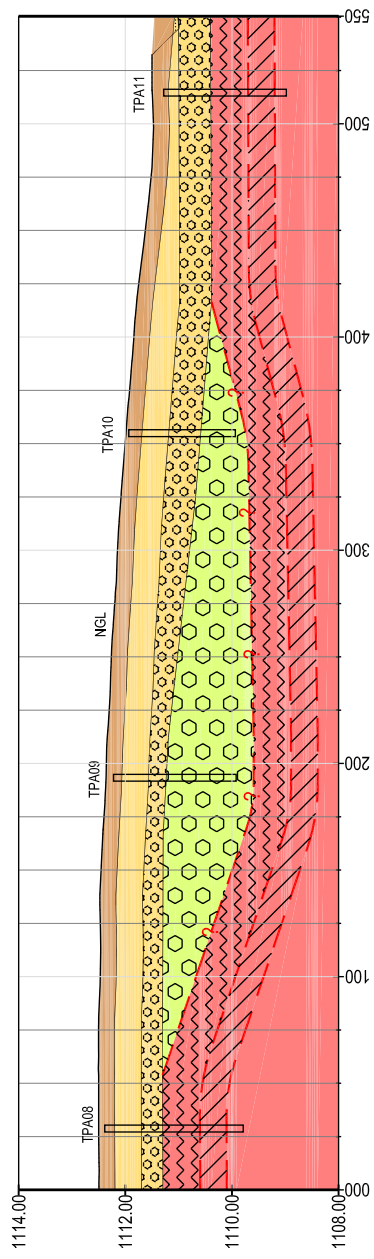
RECOMMENDED SITE POSITION

Lo 27 (WGS 84 DATUM)

POINT	Y	X
AC1	+22 203.550	+2 756 063.863
AC2	+22 059.083	+2 756 104.230
AC3	+22 243.917	+2 756 208.329
AC4	+22 099.451	+2 756 248.696



Section U-U
SCALE v 1:100
h 1:2 500



Section V-V
SCALE v 1:100
h 1:2 500

PROJECT ESKOM - DIWAALBOOM SUBSTATION

DETAIL SITE A
TEST PIT POSITIONS &
SOIL/ROCK PROFILE CROSS SECTIONS

Approved By

Drawn By MLST

Designed By MR

Reviewed By

Scale 1:5 000

Date 20/08/2008

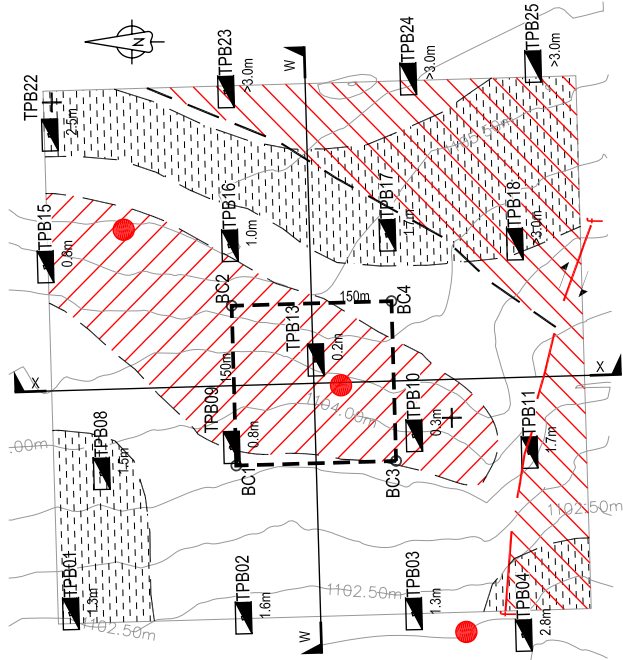
Project No. J28199 /
Dwg No. A001 /
Rev. 0



Refer to the contract for full terms and conditions.

APPENDIX B

DRAWING J28199-B-001



PLAN

SCALE 1:5 000

LEGEND

- HARDPAN FERRICRETTE
- NODULAR FERRICRETTE >0.7m
- QUARTZITE OUTCROP
- TIMEBALL HILL FM QUARTZITE
- TIMEBALL HILL FM SHALE
- TEST PIT POSITION & DEPTH TO VERY SOFT ROCK OR BETTER
- UNMARKED GRAVE
- FAULT
- GEOLOGICAL CONTACT
- RECOMMENDED TERRACE POSITION

QUARTZITE

SOIL/ROCK PROFILE

- COLLUVIUM
- NODULAR FERRICRETTE >1.0m
- HARDPAN FERRICRETTE
- REWORKED RESIDUAL QUARTZITE
- QUARTZITE

SHALE

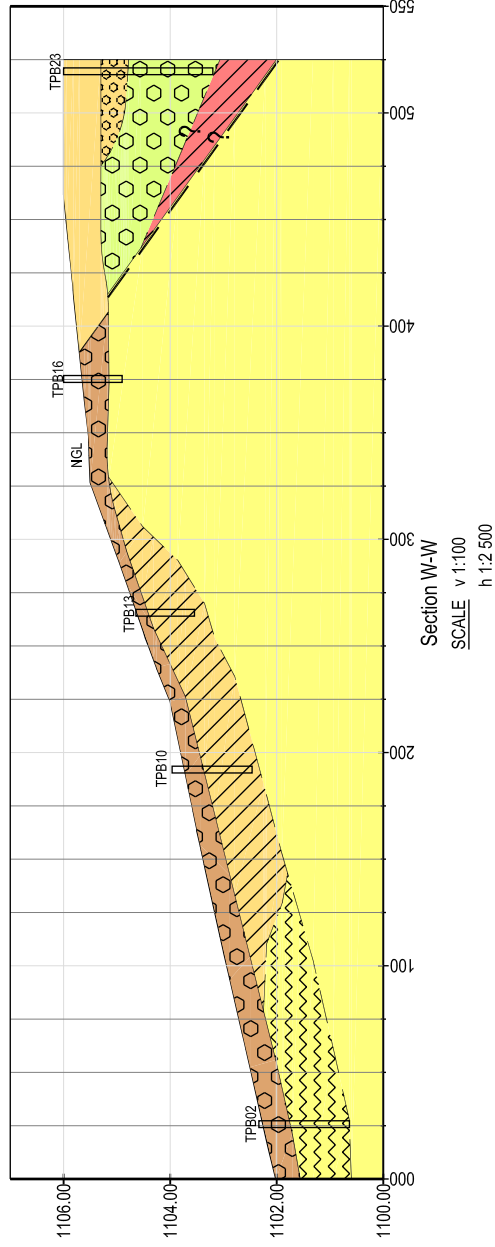
SOIL/ROCK PROFILE

- HILLWASH
- NODULAR FERRICRETTE >1.0m
- PALEO-COLLUVIUM
- RESIDUAL SHALE
- SHALE (VERY SOFT ROCK)

RECOMMENDED SITE POSITION

Lo 27 (WGS 84 DATUM)

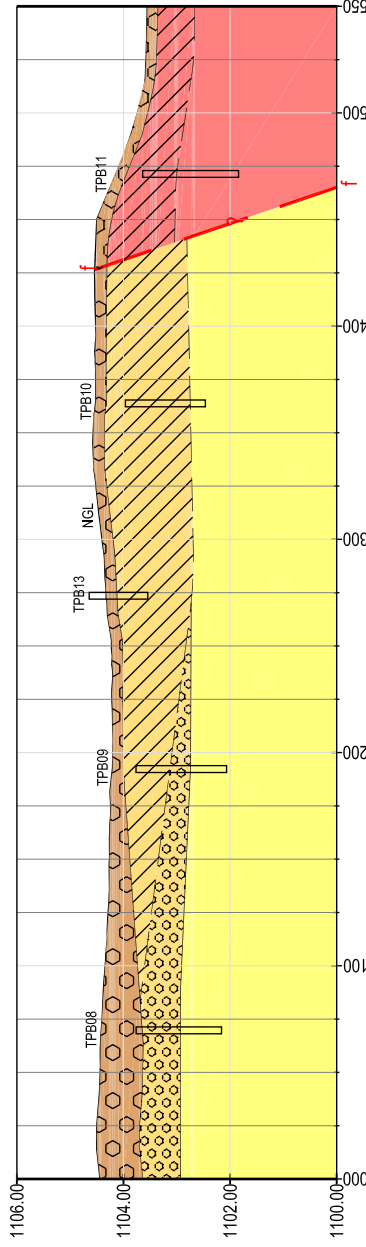
POINT	Y	X
BC1	+23 545.527	+2 755 758.551
BC2	+23 399.881	+2 755 794.429
BC3	+23 581.404	+2 755 904.197
BC4	+23 435.758	+2 755 940.075



Section W-W

SCALE v 1:100

h 1:2 500



Section X-X

SCALE v 1:100

h 1:2 500

PROJECT
ESKOM - DWALBOOM SUBSTATION

DETAIL
SITE B
TEST PIT POSITIONS &
SOIL/ROCK PROFILE CROSS SECTIONS

Approved By

Drawn By

Designed By

Reviewed By

Scale

1:5 000

Date

20/08/2008

Project No.

J28199

Dig No.

B001

Rev.

0



This drawing is not to be used in whole, or part, other than for the intended purpose and project as defined on this drawing.

Refer to the contract for full terms and conditions.